



VENTURA COUNTY  
CONTINUUM OF  
CARE ALLIANCE

ENDING HOMELESSNESS  
IN VENTURA COUNTY



# 2024 State of Homelessness in Ventura County

# Discussion Points



Point-in-Time  
Count Data



At-Risk Populations



VC CoC Homeless  
Service System



Housing  
Resources



2024 CoC Board  
Recommendations

# Who Is Counted?

---

Persons in Emergency Shelters

---

Persons in motels paid for by a program

---

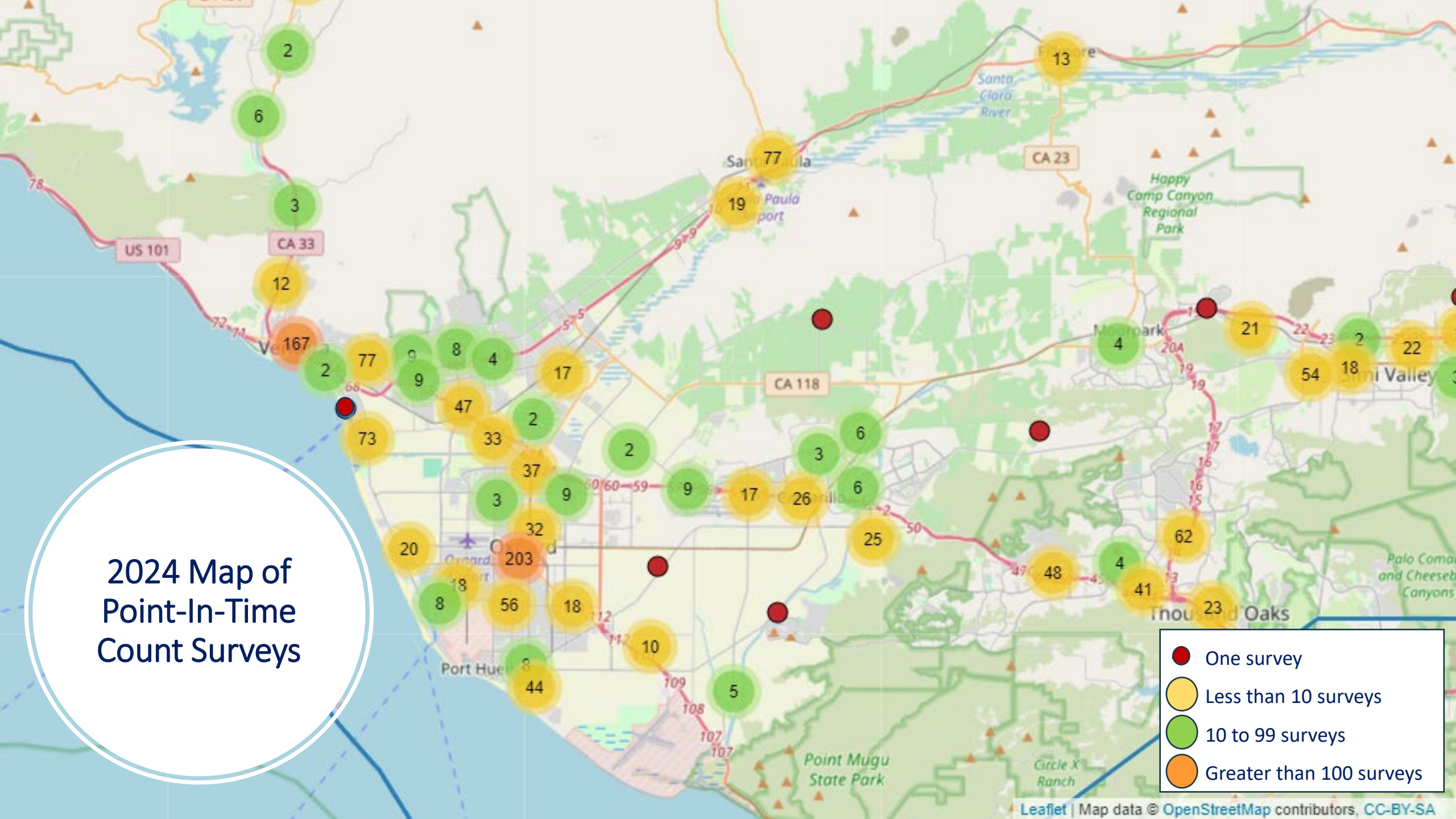
Persons in Transitional Housing

---

Persons living in places not meant for human habitation: unsheltered, vehicles, encampments

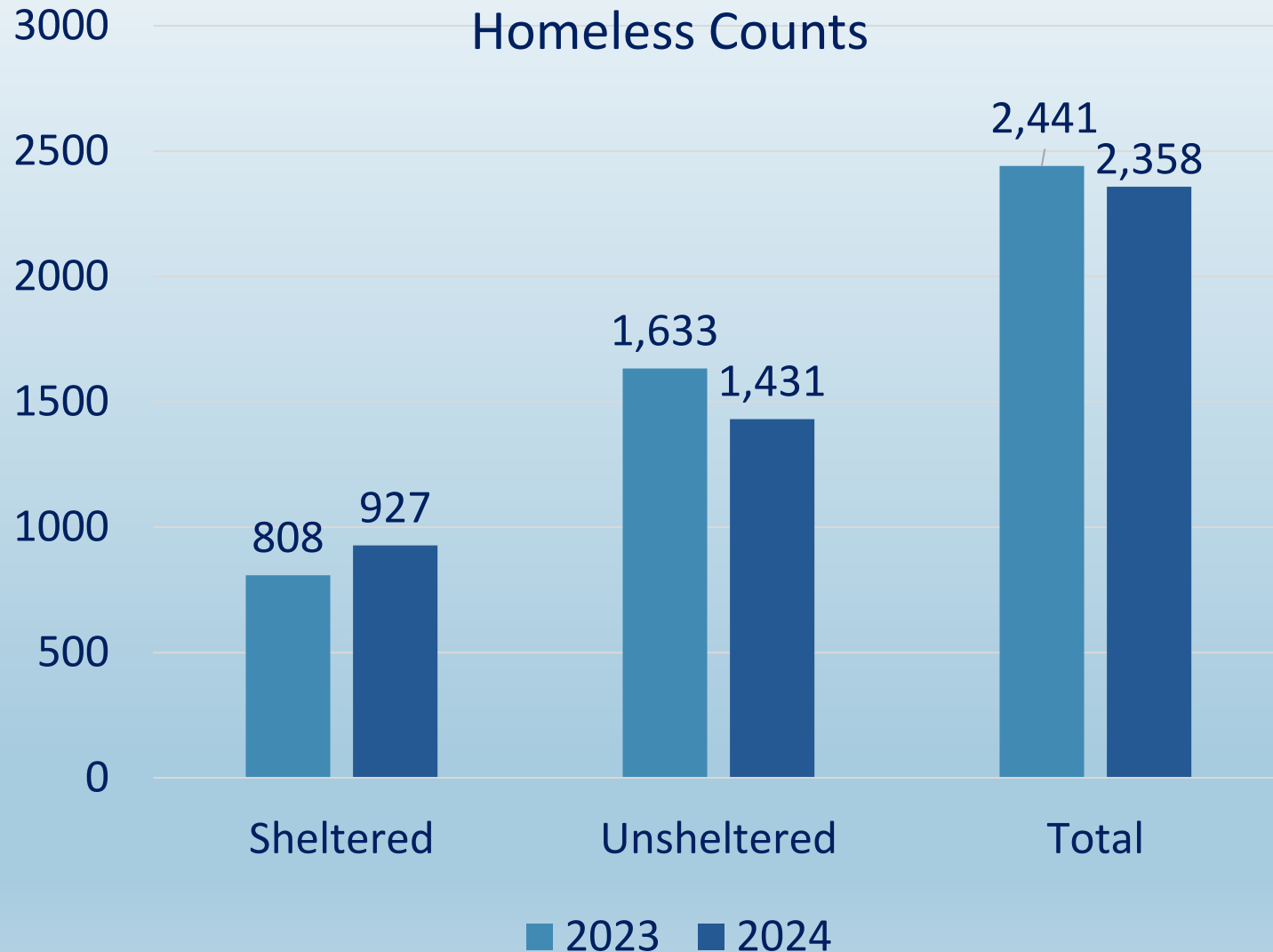


# 2024 Map of Point-In-Time Count Surveys



## Comparison of 2023 and 2024

### Homeless Counts



- **The total sheltered count increased by 14.7%.** This includes those staying emergency shelter or transitional housing programs.
- **The total unsheltered count decreased by 12.4%.** This includes those sleeping in places not meant for human habitation (streets, parks, vehicles, garages, encampments).

# Unsheltered Surveys vs Observations

## Full surveys provide:

- More accurate count
- Subpopulation data
- Referrals to resources

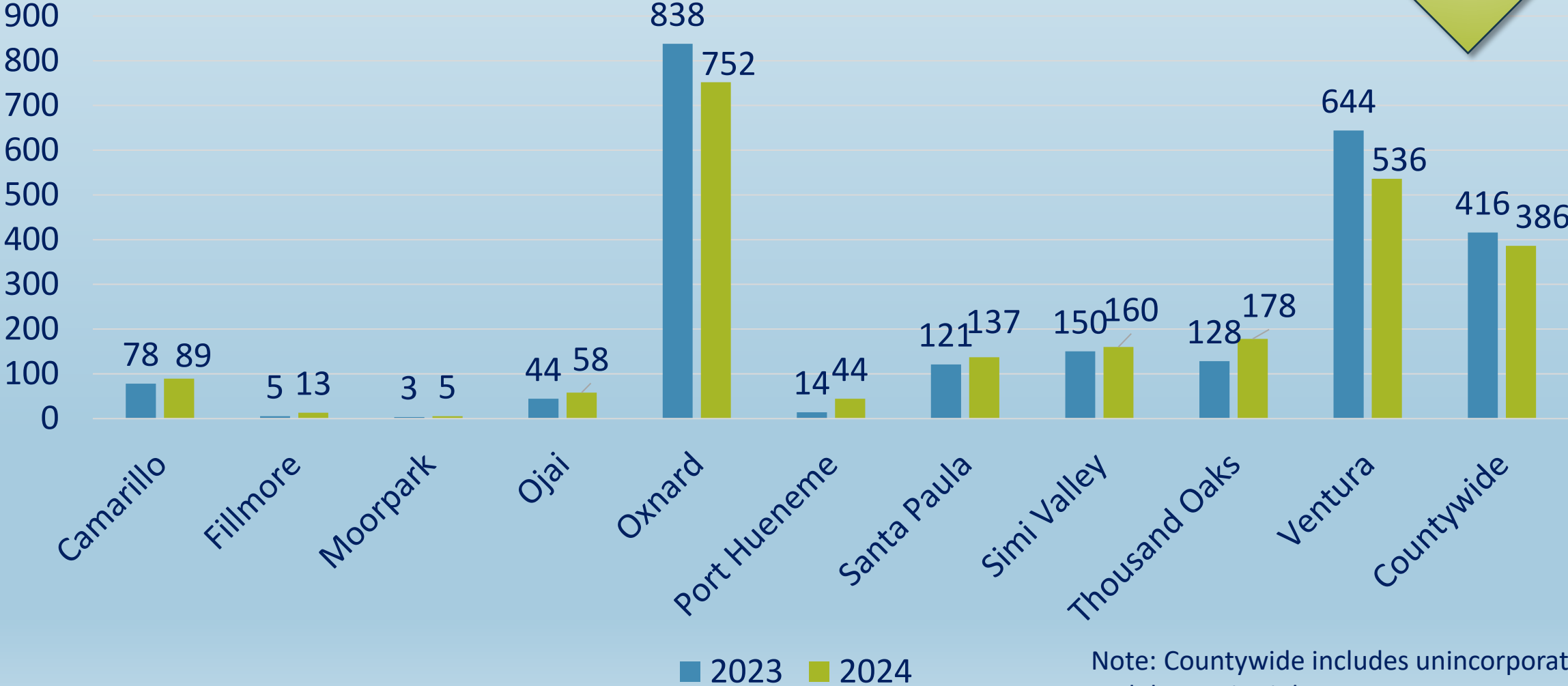


YEAR	SURVEYED		OBSERVED		TOTAL	
	#	%	#	%	#	%
2023	683	42.2	937	57.8	1,620	100
2024	933	66.2	479	33.8	1412	100

# Ventura County Jurisdictions

## 2023-2024 Comparison of Unhoused Persons

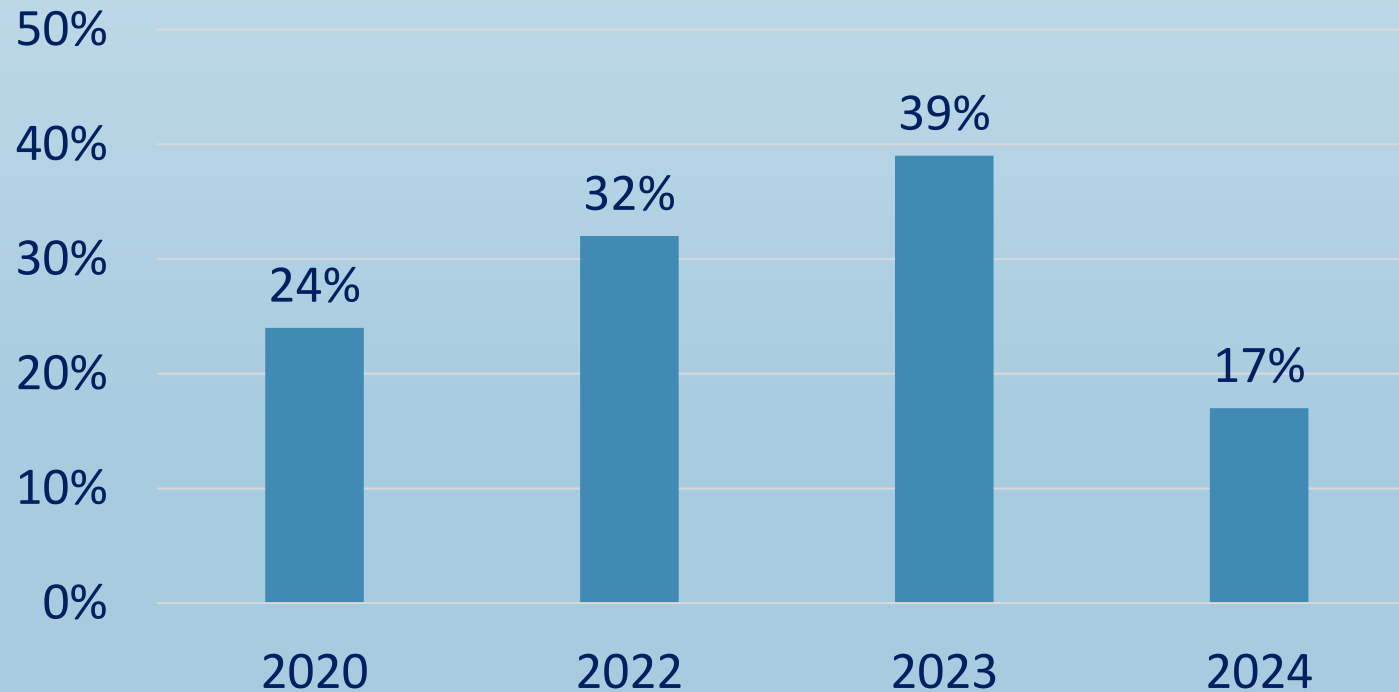
-3.4%  
Overall



Note: Countywide includes unincorporated and domestic violence programs.

# First Time Unsheltered Homeless Data

## Became Homeless for the First Time During the Past 12 Months



### 2024 First Time Homeless Data

3% Transitional Age Youth  
36% Seniors 55+

32% living in vehicles  
28% in outdoor encampments  
25% living on the streets

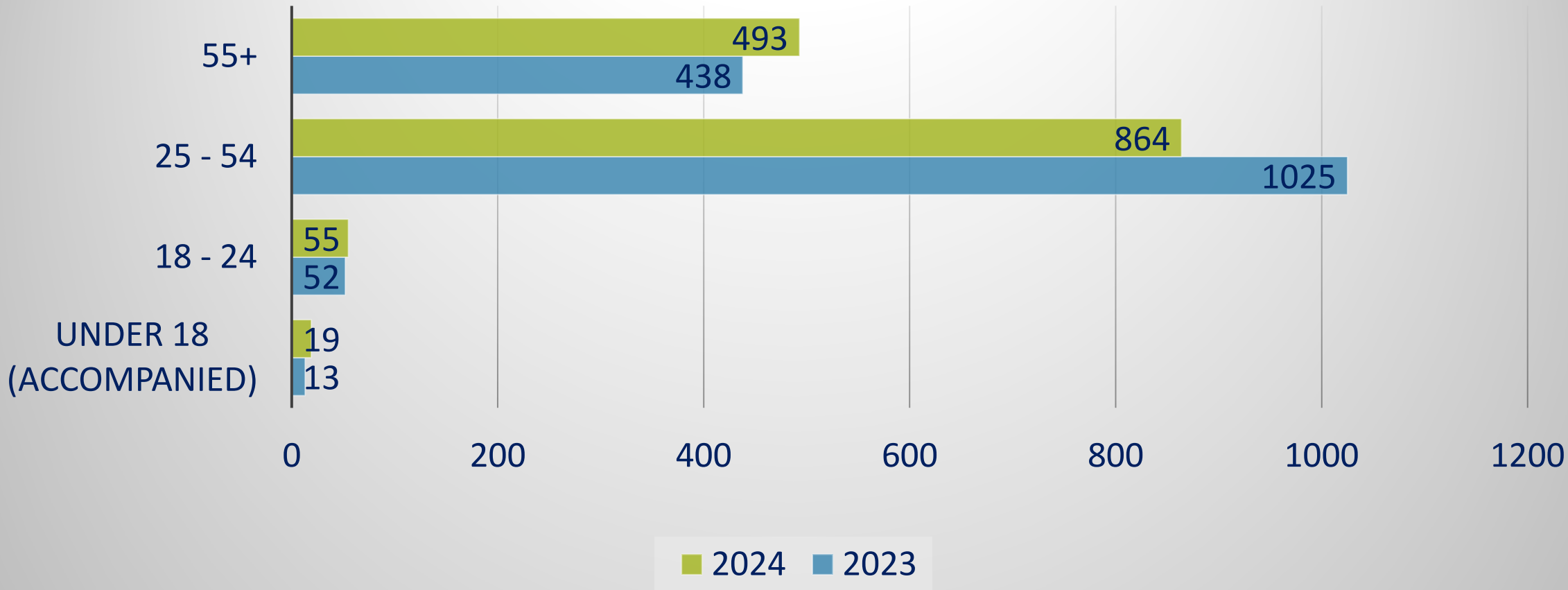
55% no income  
39% less than \$1K/mo.

Note: No Unsheltered Count in 2021 during the COVID pandemic

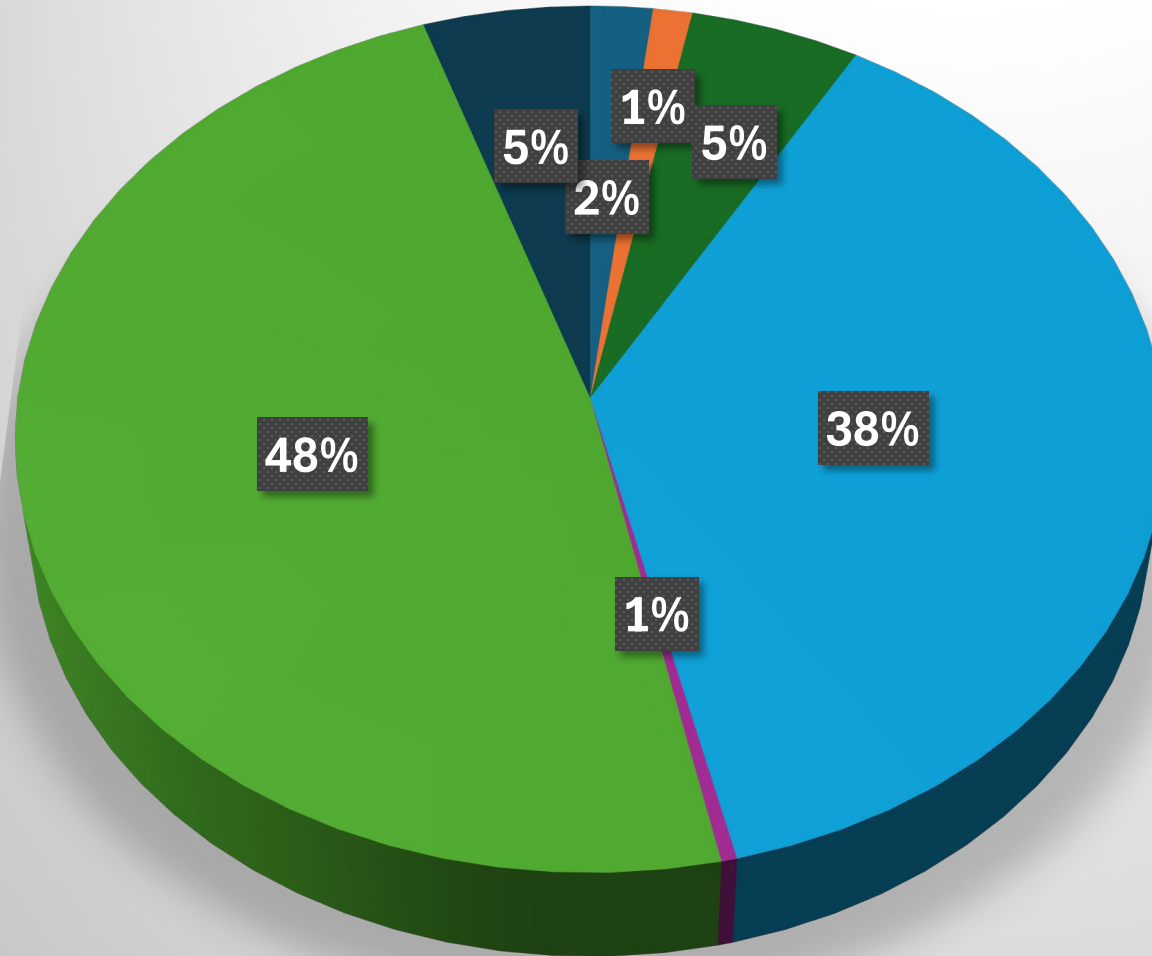


# Demographics

## Ages of Unsheltered Population



## Race of Unsheltered Population



- American Indian, Alaska Native, or Indigenous
- Asian or Asian American
- Black, African American, or African
- Hispanic or Latino
- Native Hawaiian or Pacific Islander
- White
- Multi-Racial

## Comparison of Unsheltered Subpopulation Data

Subpopulations:	2023		2024		Difference	
	#	%	#	%	#	%
Chronically Homeless Adults	787	48.6	678	48	-109	-13.9
Persons w/Chronic Health Conditions	428	26.4	438	31.0	+10	+2.3
Persons w/a Developmental Disability	131	8.1	102	7.2	-29	-22.1
Persons w/HIV/AIDS	10	0.6	9	0.6	-1	-10
Persons w/Mental Health Problems	353	21.8	349	24.7	-4	-1.1
Persons w/a Physical Disability	334	20.6	346	24.5	+12	+3.6
Substance Users	599	37.0	422	29.9	-177	-29.5
Veterans	134	8.3	69	4.9	-63	-49
Experiencing Homelessness Because Fleeing Domestic Violence, Dating Violence, Sexual Assault, or Stalking	99	6.1	237	16.8	+138	+139

Note: Survey responses may include multiple categories so this data is duplicated.



# At-Risk Populations

# HOMELESS UNDER OTHER FEDERAL STATUTES

## Ventura County Healthcare Agency Healthcare for the Homeless

- 2,521 persons enrolled in County's Healthcare for the Homeless program.
- Approximately 90% met the HUD definition of literal homelessness.



## Ventura County Office of Education 2023-24 School District Data

- 7,455 students identified as homeless in Ventura County.
- 6,952 (93%) students were doubled up or considered at risk of homelessness.
- 500 (7%) students met the HUD definition of homelessness

# 2023 Ventura County Interface 2-1-1 Call Data

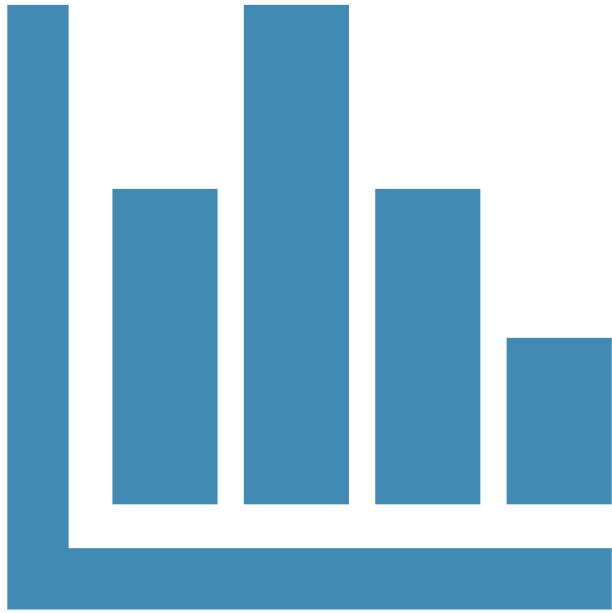
## Homeless

City	#Clients	%Clients
Oxnard	785	36.43%
Ventura	672	31.18%
Simi Valley	189	8.77%
Thousand Oaks	180	8.35%
Camarillo	113	5.24%
Santa Paula	90	4.18%
Port Hueneme	41	1.90%
Moorpark	34	1.58%
Fillmore	23	1.07%
Ojai	19	0.88%
Oak View	6	0.28%
Somis	3	0.14%
<b>Total</b>	<b>2155</b>	<b>100.00%</b>

## At-Risk of Homelessness

City	#Clients	%Clients
Oxnard	449	36.27%
Ventura	256	20.68%
Simi Valley	151	12.20%
Thousand Oaks	126	10.18%
Camarillo	92	7.43%
Port Hueneme	42	3.39%
Santa Paula	40	3.23%
Fillmore	28	2.26%
Moorpark	24	1.94%
Ojai	16	1.29%
Oak View	6	0.48%
Somis	4	0.32%
Oak Park	2	0.16%
Piru	2	0.16%
<b>Total</b>	<b>1238</b>	<b>100.00%</b>

Reporting increased calls for rental and utility assistance from prior year



VC CoC  
Homeless  
Service  
System

# 2023 VC CoC System Performance Data

6,060 persons served

## Housing Placements

57%

1,382 in PH

Target

85%

## Housing Retention

96%

Target

85%

## Average Length of Time Homeless

210 days -ES

224 days -TH

Target

ES: 90  
TH: 180

ES = Emergency Shelter  
TH = Transitional Housing

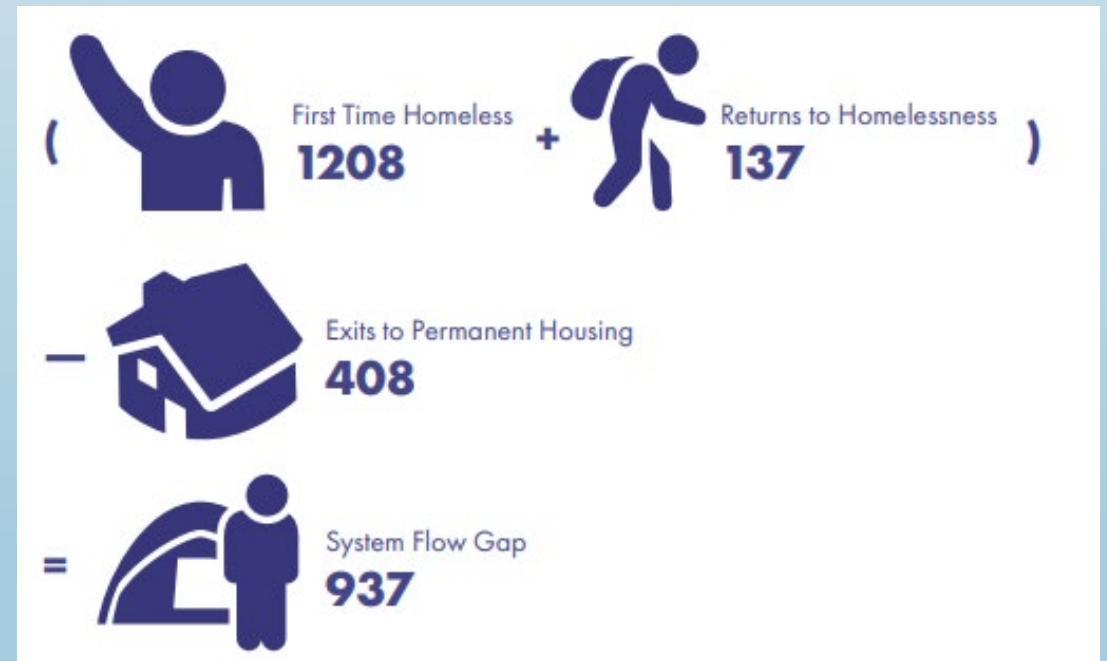


# System Flow Imbalance

*(First Time Homelessness +  
Returns to Homelessness)  
– Exits to Permanent Housing*

---

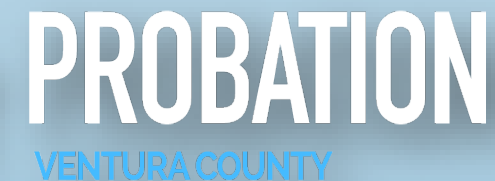
**System Flow Gap**



# Building Effective Partnerships with the Criminal Justice System

## Key areas of success:

- 1) VC CoC Board membership and HMIS onboarding.
- 2) New Peer Support Program through Second Chance Act grant funding.
- 3) Partnering with Ventura County Probation Agency through a Bridging Boundaries Action Lab.
- 4) Expanding cross system agency partnerships for Homeless Court.





# Housing Resources

# 2024 HOUSING INVENTORY CHART

■ Utilized ■ Under Development

RAPID RE-  
HOUSING

547

SUPPORTIVE  
HOUSING

733

355

TRANSITIONAL  
HOUSING

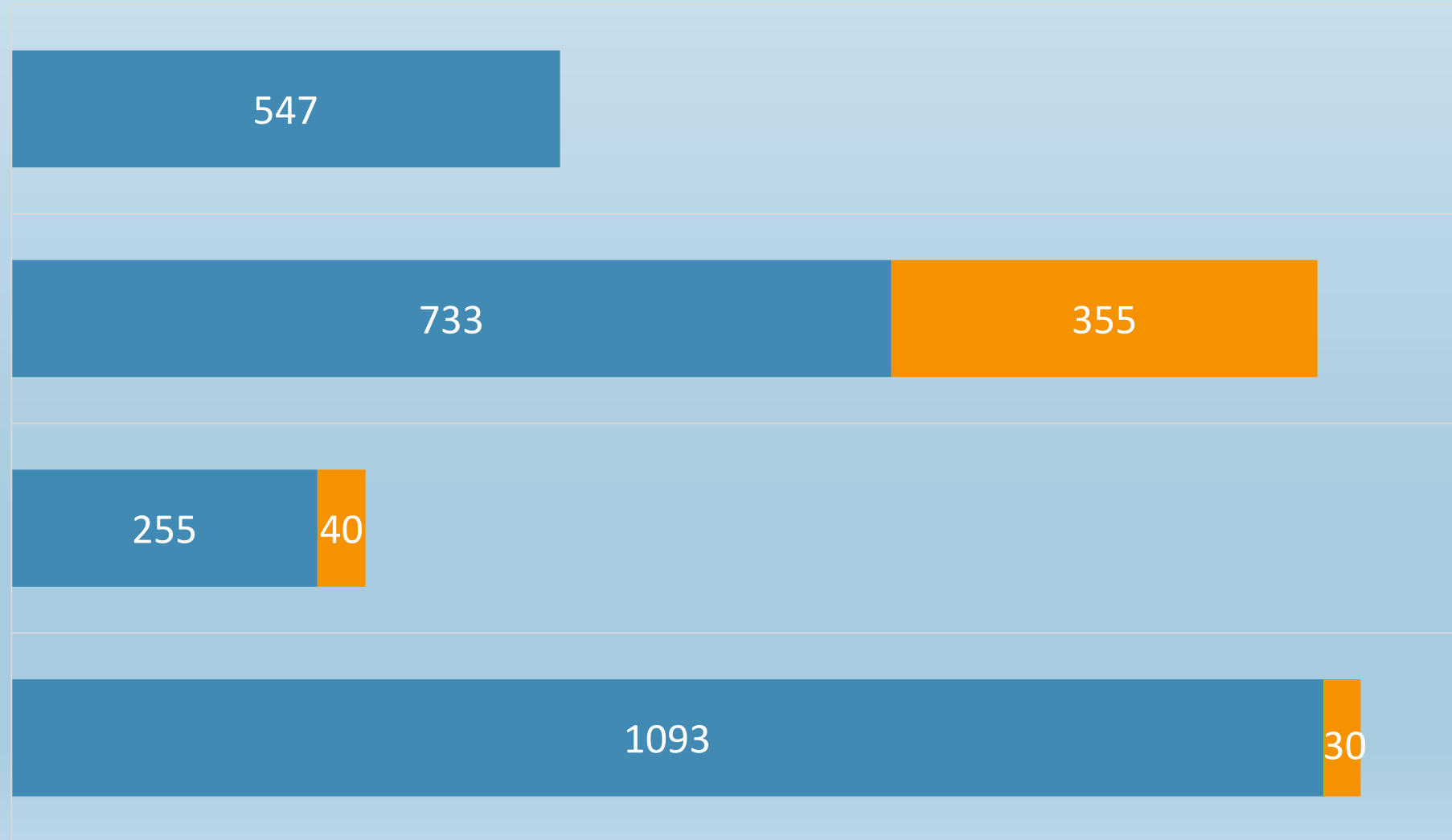
255

40

EMERGENCY  
SHELTER

1093

30



# 2024 VC CoC Board Recommendations

Achieve	Achieve functional zero with homeless Veterans in 2024 in collaboration with Veteran Affairs and local veteran service providers.
Further	Further efforts to end homelessness among unsheltered youth with the expansion of new transitional housing programs for Transitional Age Youth (TAY).
Reduce	Reduce the number of chronically homeless adults by 2024 with the addition of new PSH units.
Encourage	Encourage each jurisdiction to review their 2023 unsheltered homeless count and align local strategies to reduce unsheltered homelessness.
Expand	Expand the efforts of the VC CoC Workgroup partnering with People with Lived Experience to solicit feedback and provide recommendations.
Reduce	Reduce the number of first time homeless households by expanding homelessness prevention programs and implementing diversion strategies.
Leverage	Leverage resources to prioritize or increase supportive services for housing retention.

# Questions?

Jennifer Harkey, MPA  
VC CoC Program Director  
Ventura County Continuum of Care  
County Executive Office  
805-658-4342  
[Jennifer.Harkey@ventura.org](mailto:Jennifer.Harkey@ventura.org)  
[www.venturacoc.org](http://www.venturacoc.org)



VENTURA COUNTY  
CONTINUUM OF  
CARE ALLIANCE

ENDING HOMELESSNESS  
IN VENTURA COUNTY

